



# *National* Agriculture in the Classroom

---

## **2017 State Reports**

**48 States and the District of Columbia  
Reporting**

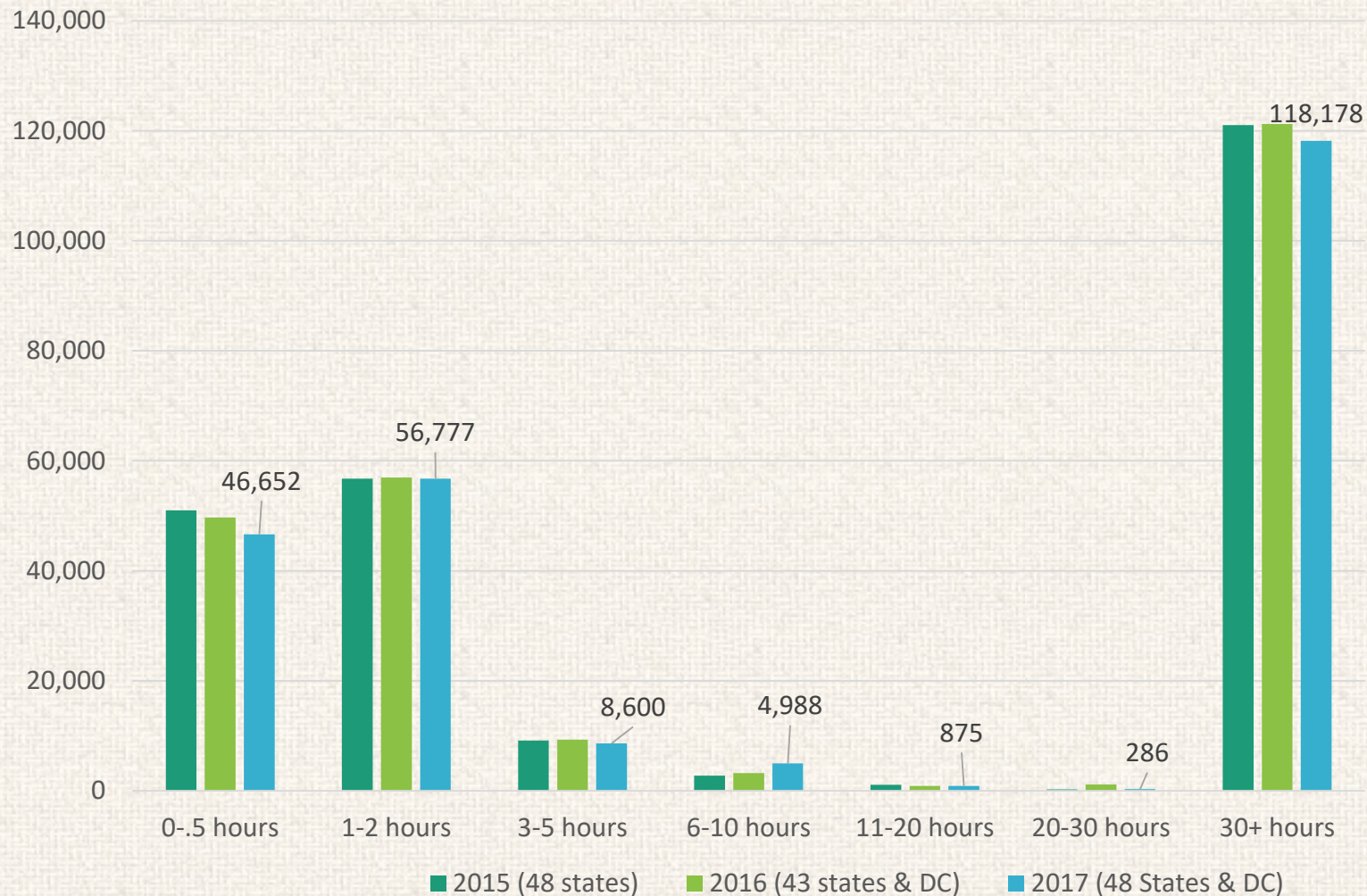


Debra Spielmaker, Team Leader  
National Center for Agricultural Literacy  
June 26, 2018

**UtahState**University

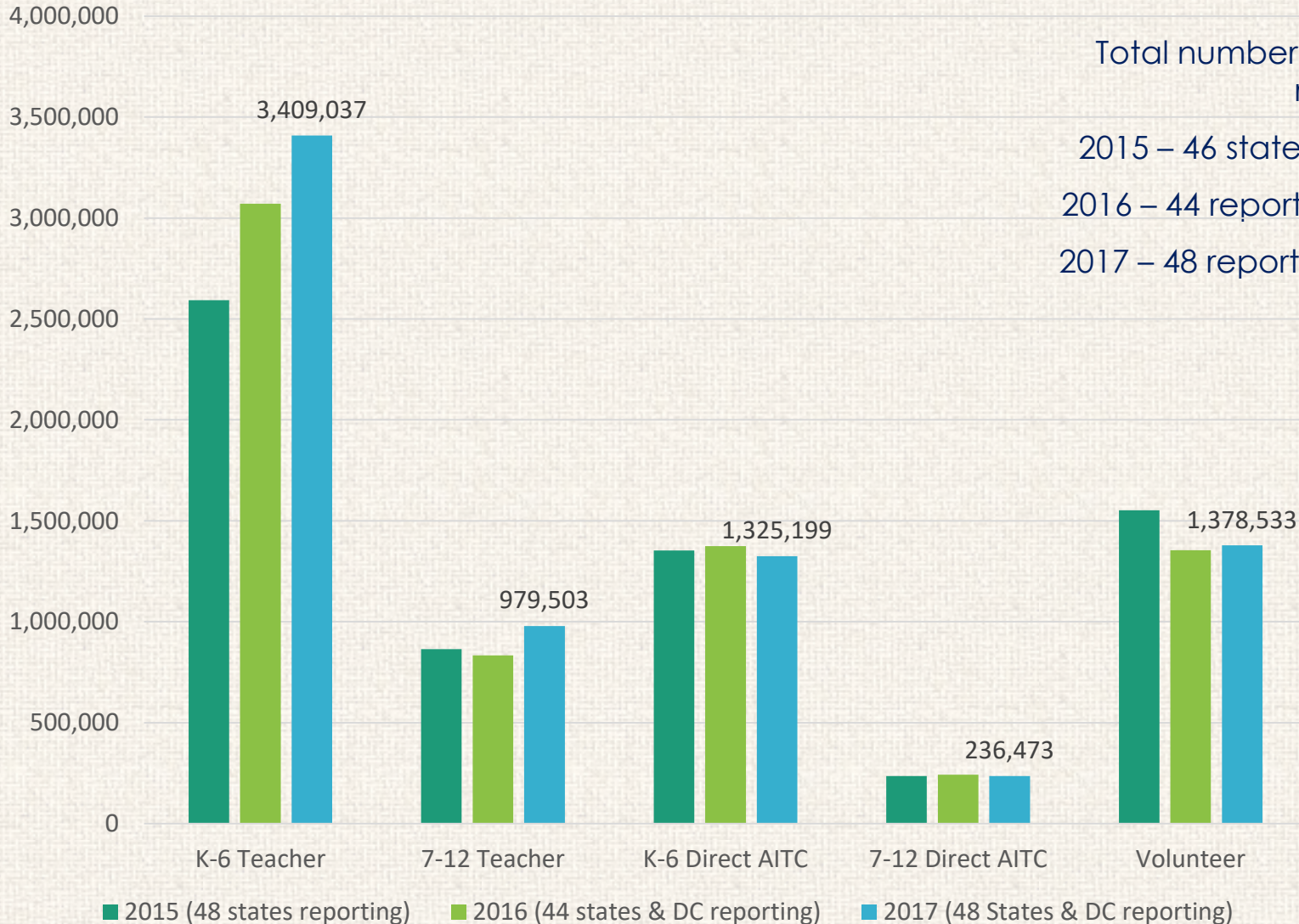


# Estimate **number of teachers** trained face-to-face statewide with AITC programs, curriculum, or other resources.





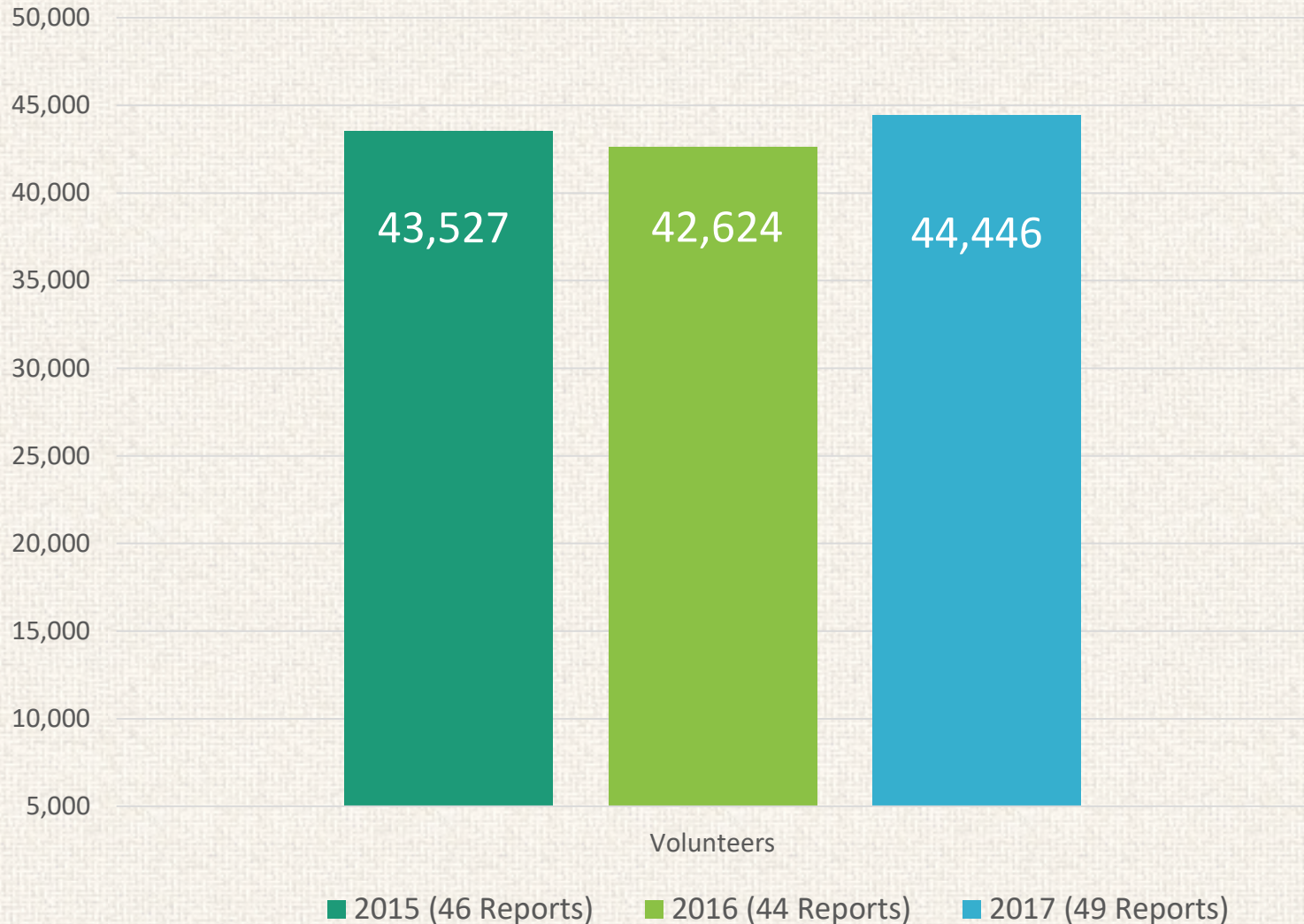
The estimation of the **number of students** reached statewide through their teachers, directly through AITC staff and volunteers with AITC programs, curriculum, or other resources.



Total number of students reached in:  
2015 – 46 states: 6,598,618  
2016 – 44 reports: 6,876,332  
2017 – 48 reports: **7,328,745**

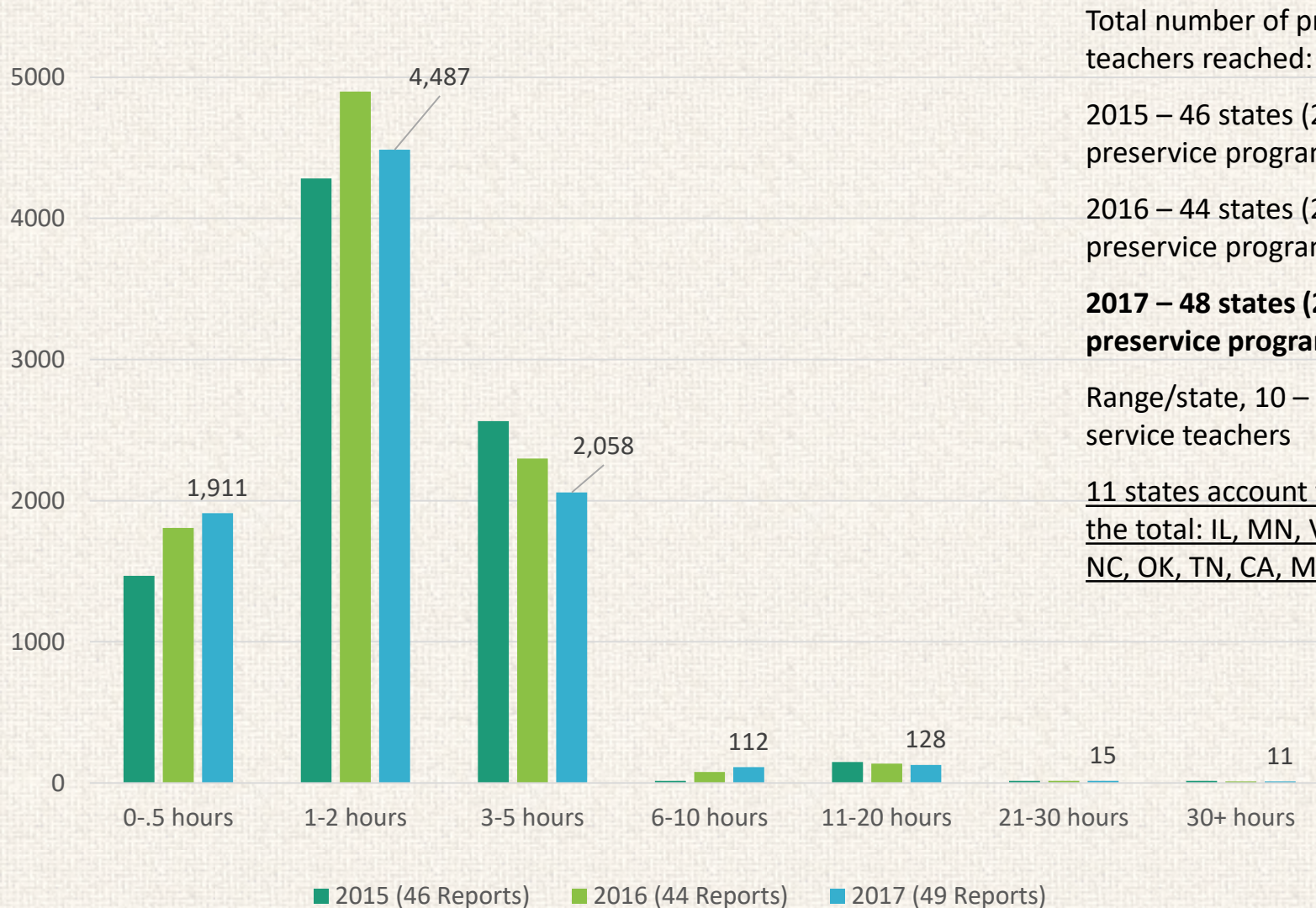


# Estimate the number of volunteers who conducted or assisted with AITC programs.





# Total number of elementary and secondary pre-service teachers contacted or trained with AITC.



Total number of pre-service teachers reached:

2015 – 46 states (24 reported preservice programs): 8,508

2016 – 44 states (24 reported preservice programs): 9,248

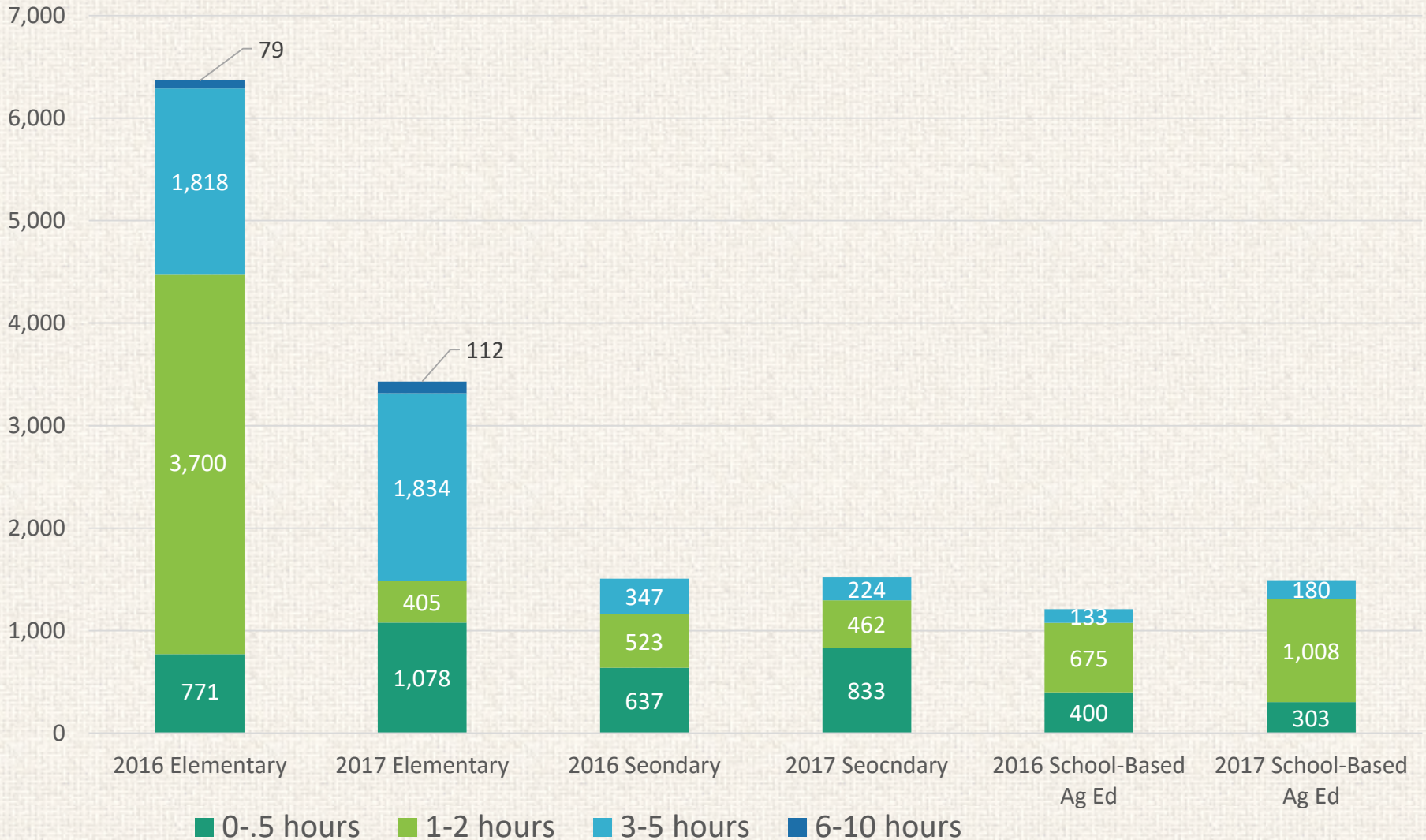
**2017 – 48 states (27 reported preservice programs): 8,722**

Range/state, 10 – 2,136: pre-service teachers

11 states account for 84% of the total: IL, MN, VA, UT, ME, NC, OK, TN, CA, MS, NE

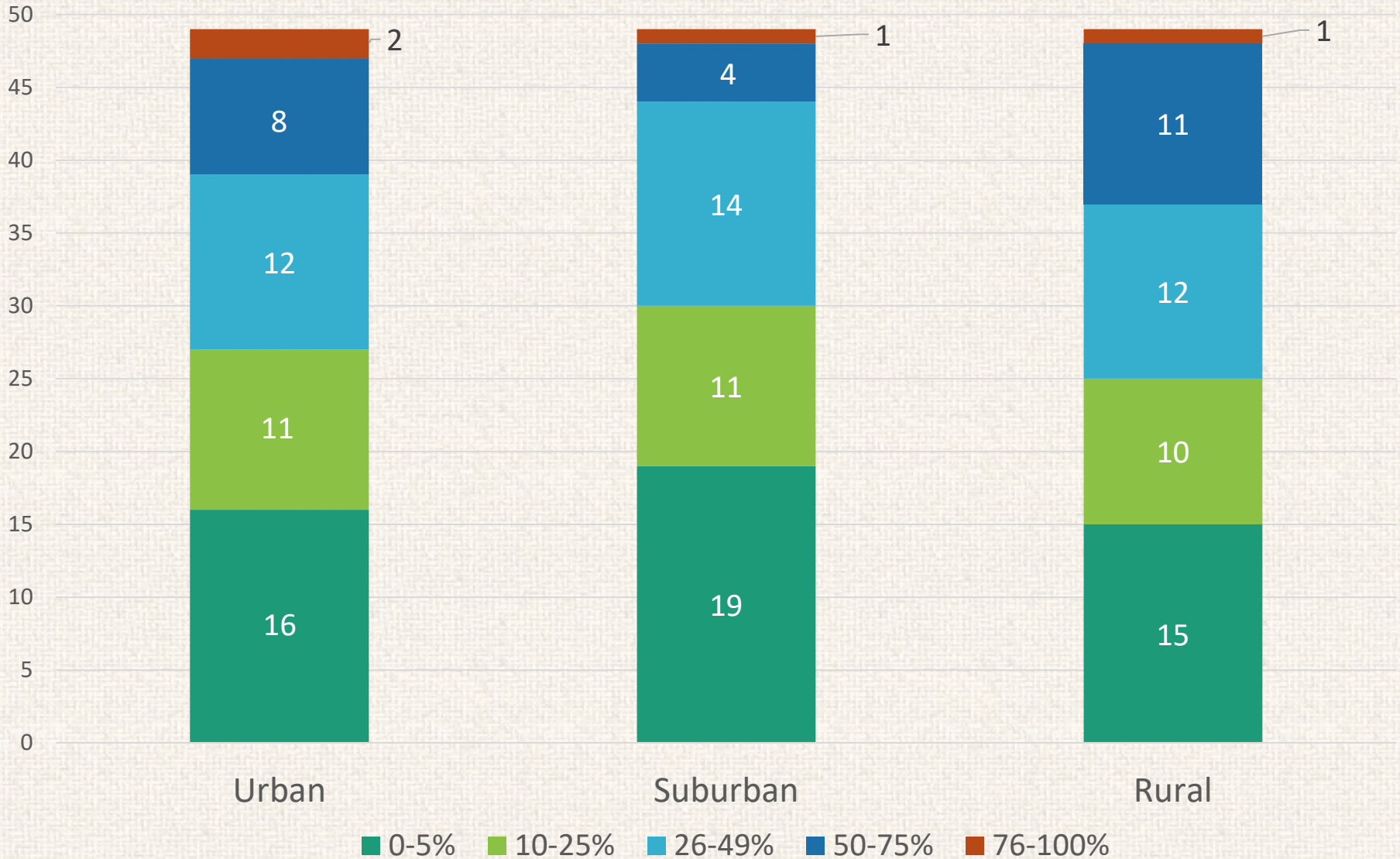


# Total number of elementary, secondary, Ag Ed pre-service teachers contacted or trained with AITC.





# Estimated percentage of teachers state AITC programs engage with by geographical area

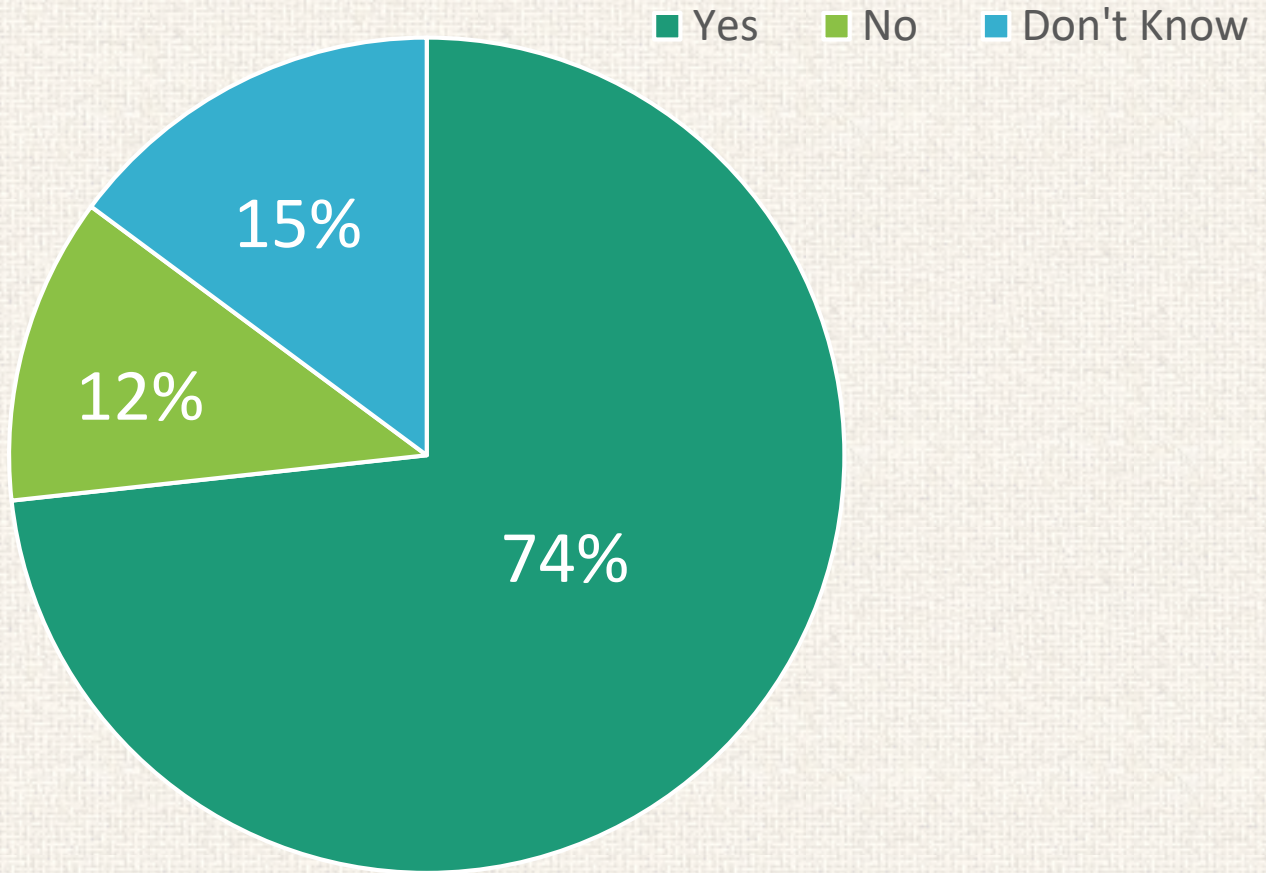




# Do your stakeholders consider agricultural career education a priority for your program?

---

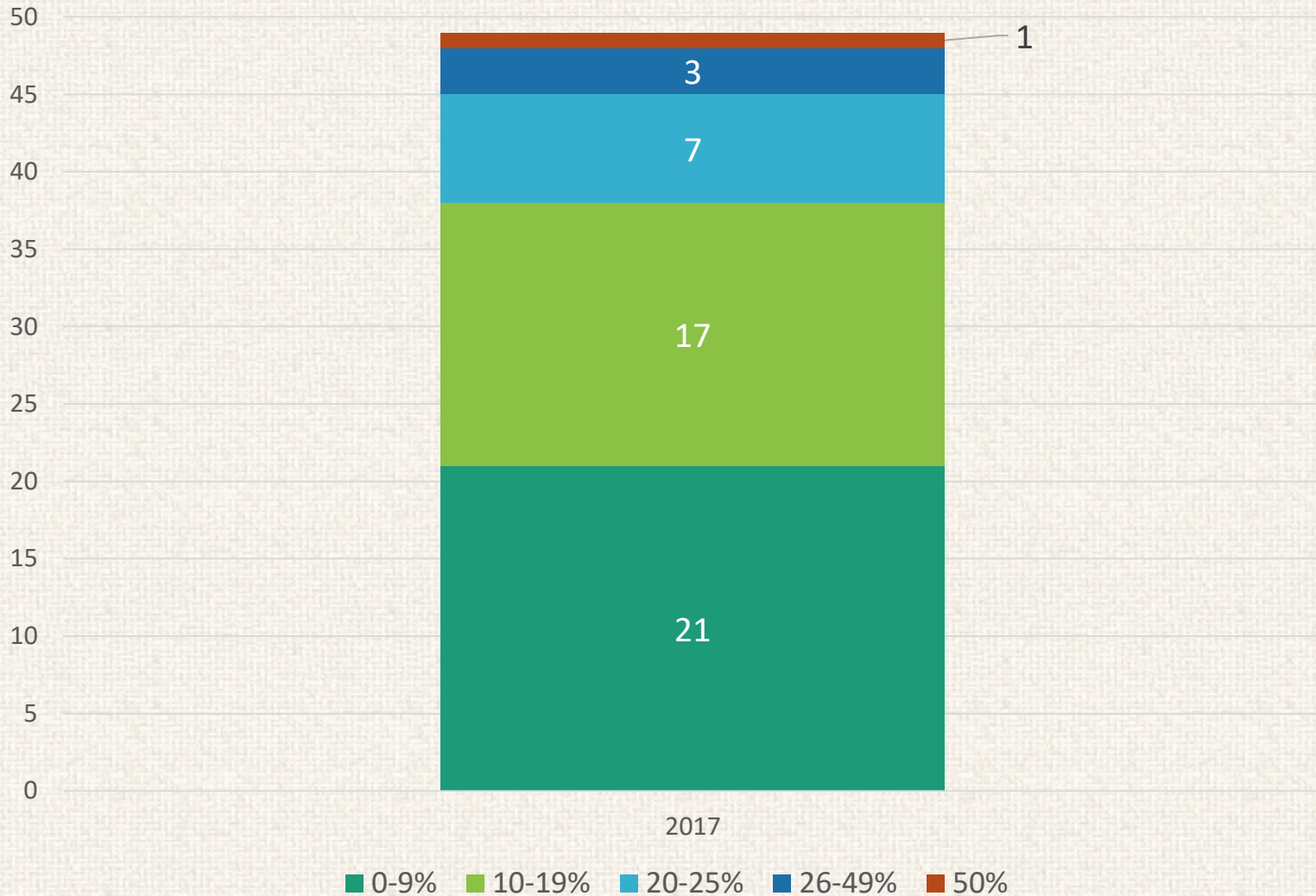
Stakeholder View on Agricultural Career Education







# Estimated percentage of time and number of state program workshops that included programming on agricultural careers





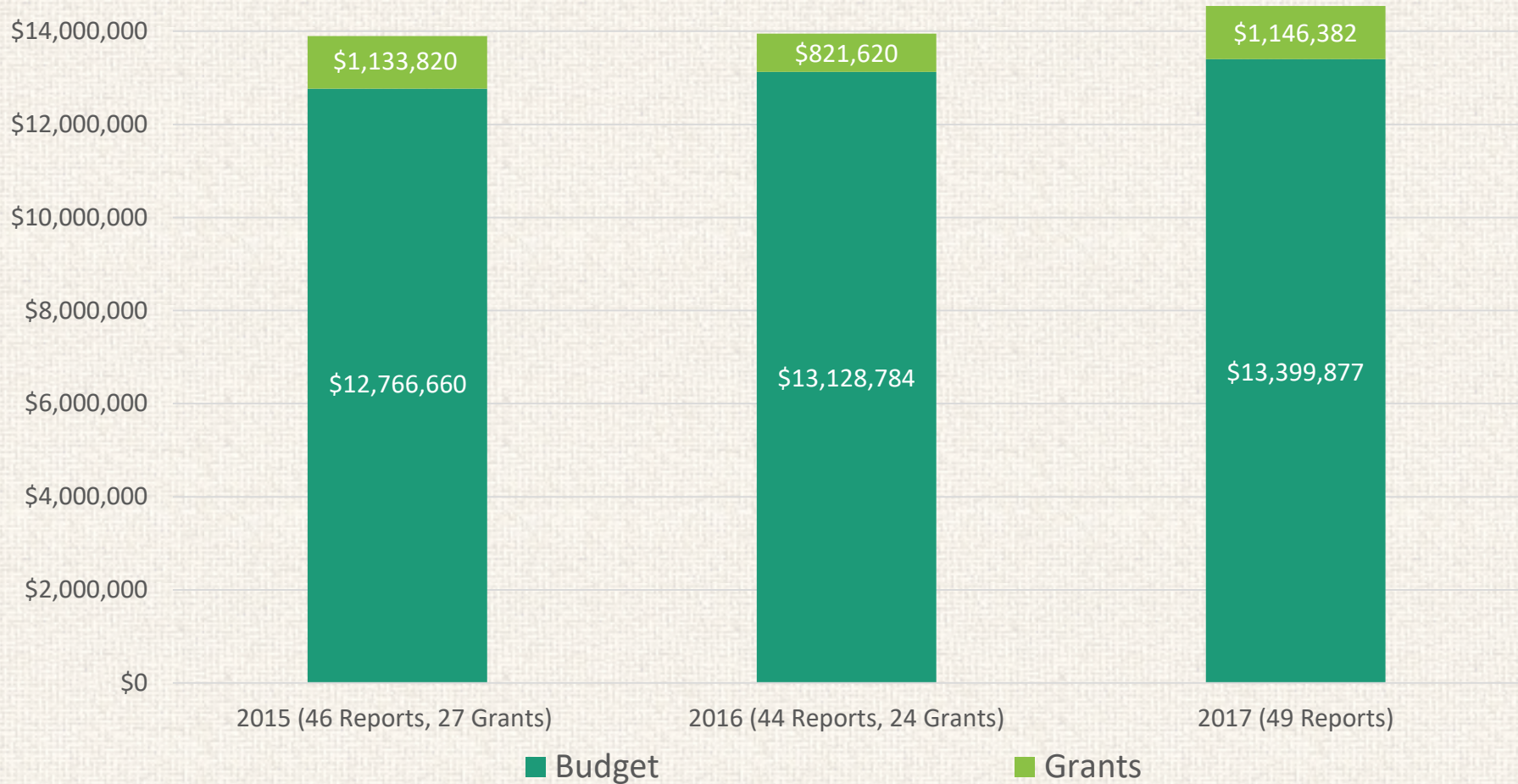
# Frequency of state programs providing career instruction at workshops related to the agricultural career pathways

Career Pathway Instruction





# Budgets



**Budget Range 2015: \$0 - \$2,599,942**

**Grant Range 2015: \$0 - \$170,000**

**Budget Range 2016: \$0 - \$2,432,000**

**Grant Range 2016: \$0 - \$200,000**

**Budget Range 2017: \$0 - \$2,410,000**

**Grant Range 2017: \$0 - \$240,000**



## Funding sources for state AITC budgets.

*No state receives direct federal on-going funds.*

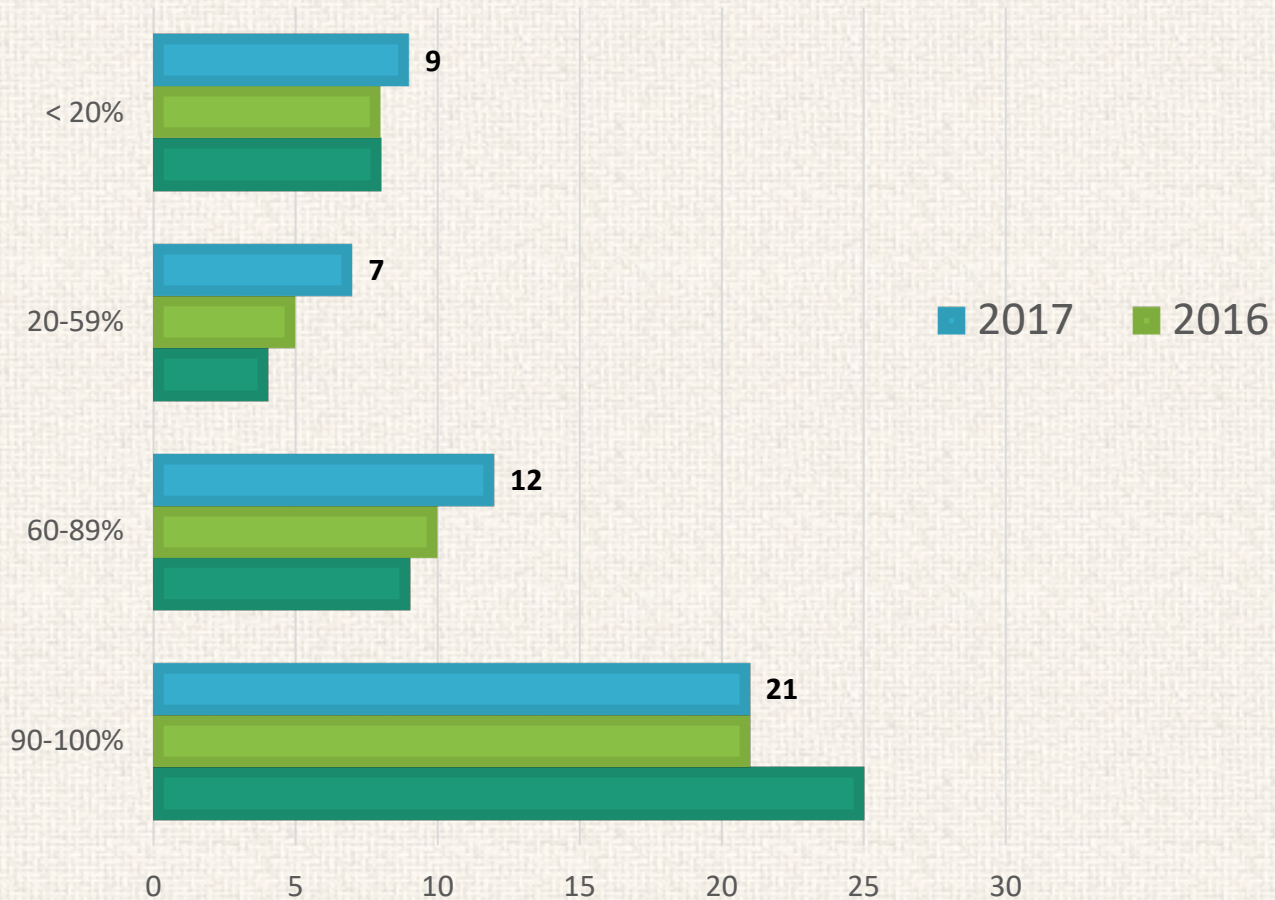
---

- 24 (49%) reported 100% private funding
  - (48% in 2016)
- 20 (41%) reported state and private funding
  - (43% in 2016)
- 2 states reported 100% state funding (OK, NY)





A full-time equivalent (FTE) is 40 hours per week. What percentage of an FTE did **you** (the state contact) dedicate to Agricultural Literacy/AITC in 2017?



- 43% (2017), 50% (2016), 54% (2015) of State Contacts work 90-100% on AITC programming
- 9 (2017), 6 (2016) of State Contacts work less than 15% on AITC programming
- 2 reported zero FTEs (volunteers)



# Outputs and Outcomes

- Accomplishment (output): achieving the completion or fulfillment of something
- Impact (outcome): to have an immediate and strong (measurable) effect on something or somebody related to program goals or objectives

Alabama	  	Alaska	  	American Samoa		Arizona	  
Arkansas	  	California	  	Colorado	  	Connecticut	 
Delaware	 	District of Columbia		Florida	  	Georgia	 
Guam		Hawaii	 	Idaho	  	Illinois	  
Indiana	  	Iowa	  	Kansas	  	Kentucky	 
Louisiana	  	Maine	  	Maryland	 	Massachusetts	 
Michigan	  	Micronesia		Minnesota	  	Mississippi	 
Missouri	 	Montana	  	Nebraska	 	Nevada	 
New Hampshire	  	New Jersey	 	New Mexico	  	New York	  
North Carolina	  	North Dakota	  	Northern Marianas		Ohio	  
Oklahoma	  	Oregon	  	Pennsylvania	 	Puerto Rico	
Rhode Island	 	South Carolina	 	South Dakota	 	Tennessee	  
Texas	  	Utah	  	Vermont	 	Virginia	  
Washington	  	West Virginia	 	Wisconsin	 	Wyoming	  

To see state accomplishments and impacts, review the state summaries website:  
[http://agclassroom.org/affiliates/state\\_programs.cfm](http://agclassroom.org/affiliates/state_programs.cfm)



### **Vision**

Agriculture is valued by all.

### **Mission**

Increasing agricultural literacy through K-12 Education.

### **Agricultural Literacy**

An agriculturally literate person understands and can communicate the source and value of agriculture as it affects our quality of life.